

HITECH

ELECTRONIC UNIT

Quality & Trust

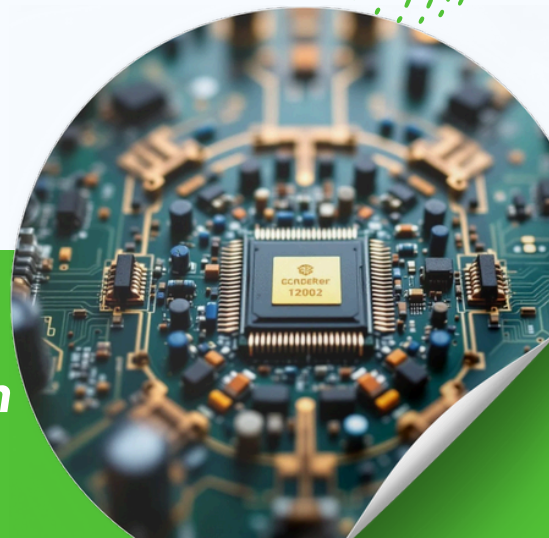


Products
catalogue



HITECH
Quality & Trust

hitechelastoseals.co.in

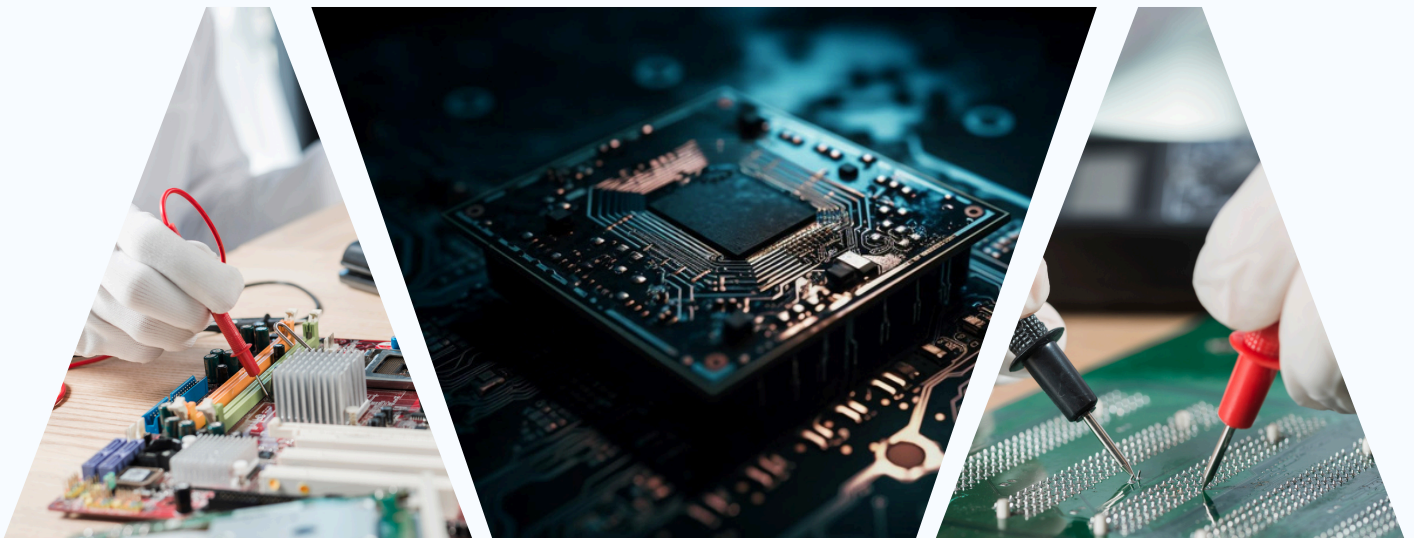


ABOUT US

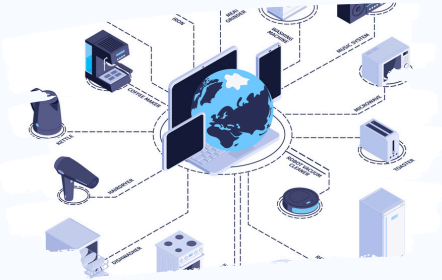
HiTech Electronic Unit specializes in providing reliable and innovative electronic solutions for industrial applications. With a focus on quality, precision, and customer satisfaction, we deliver products that meet the highest performance standards. Our commitment to technology and excellence drives us to serve our clients with trusted and efficient solutions.

Why Choose Hi-Tech Electronic Unit

- **Quality You Can Trust:** Every product is built with precision and tested to meet the highest standards.
- **Innovative Solutions:** We combine advanced technology with practical design to deliver efficient electronic systems.
- **Customer-Focused Approach:** Your requirements guide our process — from design to delivery.
- **Experienced Team:** Skilled professionals ensure reliable performance and timely support.
- **On-Time Delivery:** We value your time and maintain consistent supply schedules.



INDUSTRIES WE SUPPORT



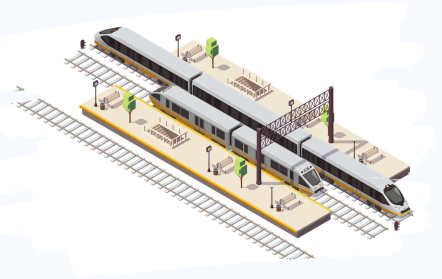
**NETWORKING
SYSTEMS**



**CONSUMER
ELECTRONICS**



**MEDICAL
ELECTRONICS**



RAILWAYS



IOT



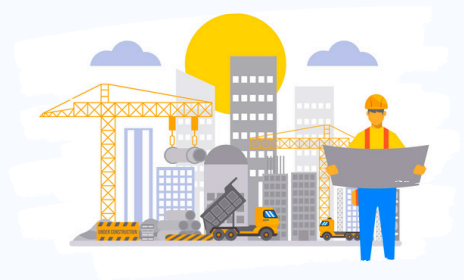
**INDUSTRIAL
INSTRUMENTS**



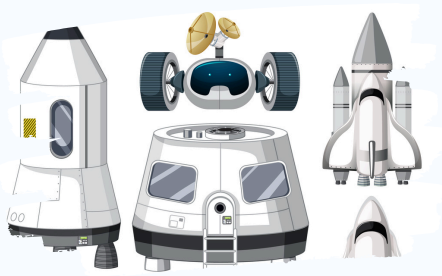
AUTO MOBILES



TELECOMMUNICATION



CONSTRUCTION



AEROSPACE



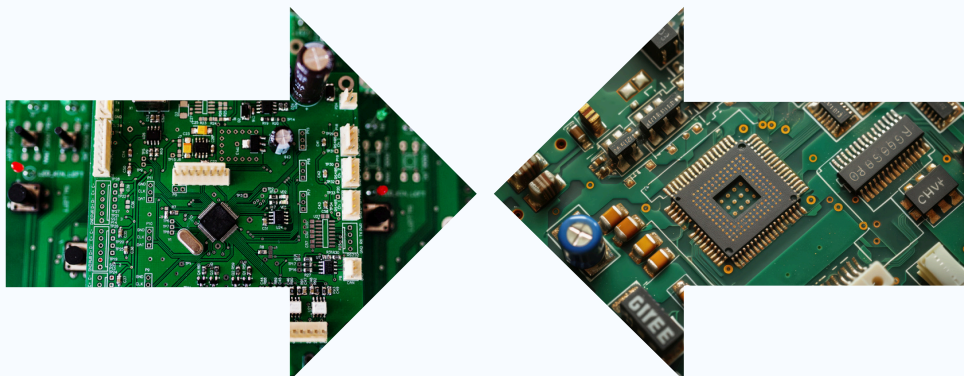
ROBOTICS



**MULTIPLE
APPLICATIONS**

DESIGN & PRODUCT DEVELOPMENT

- PCB design up to 16 Layers.
- High-speed interface Designs.
- Analog, digital and mixed design solutions.
- Wireless and RF Designs.
- HDI and Rigid-Flex PCB Designs.
- Processor design: 8051, ARM, Power PC.
- High-speed: SerDes, PCIe, Ethernet, SFP, USB.
- Memory: DDR3, DDR4, DDR5 and Flash.
- FPGA and CPLD design: Xilinx, ALTERA.
- Signal integrity analysis for High-speed interfaces.
- Measurement of Engine value temperature.
- Engine oil analysis.
- Automotive Advertisement sound Card.
- Electro Mechanical Component for control value.
- RFID Card Product for Hospitals.
- IOT Projects.
- Real-time Customer Feedback Device.
- Loop Current (SMPS) & Consumer Electronics.
- Embedded Systems& Power Electronics.
- Wireless and RF boards.
- Robotic &Automation.



PCB FABRICATION

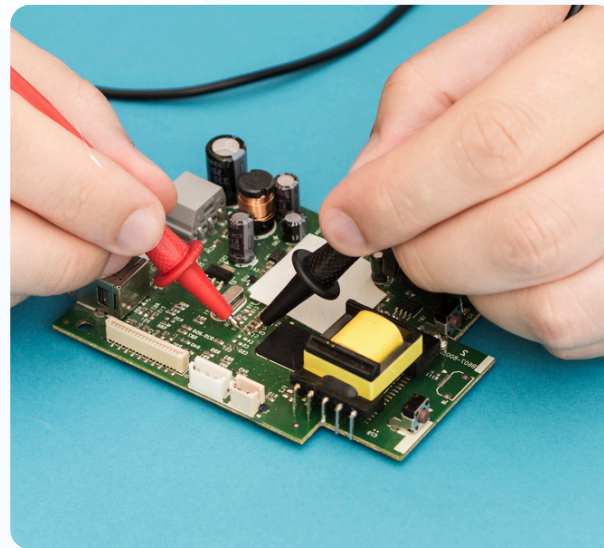
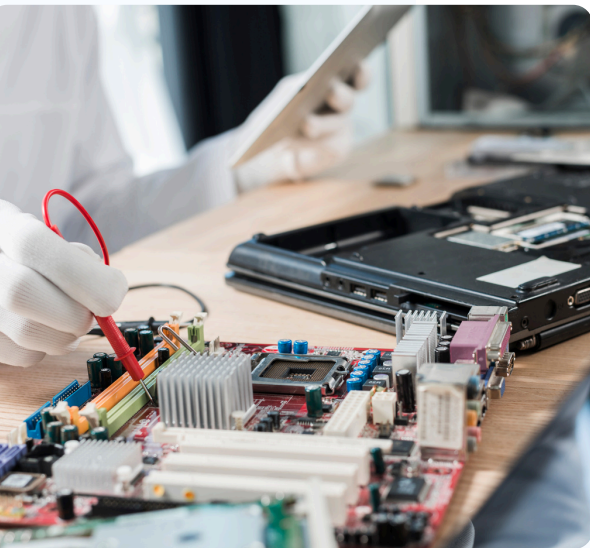
ITEM	CAPABILITY	DETAILS
Layer	1-24 layer	1-24 copper layers PCB prototypes & Bulk orders
Controlled Impedance PCB	4/6 layer	No extra charge and only accept our default layer stack-up
Material	FR-4, Aluminum-Core, Copper-Core, RF PCB (Roger's), Flex PCB	Materials available
Thickness	0.4 - 5 mm	0.4/0.6/0.8/1.0/1.2/1.6/2.0 mm
Finished Outer Layer Copper	1oz- 3oz (35µm to 110µm)	Finished outer layer copper weight is 1oz to 3oz
Min. Trace	3.5mil	For 1 & 2 Layer PCB, the min. trace width is 5 mil; For Multi Layer PCB, the min. trace width is 3.5mil.
Min. Spacing	3.5mil	For 1& 2 Layer PCB, the min. spacing is 5 mil; For Multi Layer PCB, the min. spacing is 3.5mil.
Surface finish	HASL (lead / leadfree), ENIG, OSP (copper core boards only)	FR4 can be made in all finishes. ROGER'S & FLEX PCB, only ENIG finish.
Drill Hole Size	0.4-6.3mm	Min. drill size is 0.4mm, Max. drill size is 6.3mm.

COMPONENT PROCUREMENT

- Comprehensive components procurement service.
- Global procurement system (India, US, UK, China, Singapore, Europe & Germany).
- Purchasing from franchised distributors or with the manufacturer.
- Support Obsolete and hard to find electronic components.
- Bill of Material (BoM) quote in 2 days.
- Support minimum order quantity.
- Supply Chain Management.
- Hassle - Free Import & Export Service.
- Deal with active, passive, modules, sensors, wires, cables, display etc.
- 100% Brand new and original components.
- Authentic & Turnkey Solutions.
- Quick lead time.
- Competitive price.
- 100% Total Quality and Customer Satisfaction.
- Latest date code, from our antistatic shelf.
- CoC (Certificates of Conformance).
- Components with test report for Bulk order from White Horse or Top Test.
- Physical Analysis.
- Proper packing with Label and Part Number.
- Services at your door step.
- 24/7 Virtual Assistant.

PCB ASSEMBLY

TYPES	USES
Solder Types	Lead-Free (RoHS Compliant), Non - RoHS(Lead).
Max.Board Size	450mm x 450mm.
Board Type	Rigid PCB, Flexible PCB & Rigid-Flex PCB's.
Assembly Types	Surface Mount (SMT) Assembly.
	Ball-Grid-Array(BGA) Assembly.
	Mixed technology (SMT & Thru-hole).
	Through-Hole Assembly.
Component Types	BGA 0.25mm pitch with X-ray testing.
	Passive components as small as 01005 (0402)package.
	Fine-pitch components as small as 0.38mm pitch.
	Cable & wire.
Quality Inspection	Visual inspection.
	AOI checking.
	BGA placement - X-RAY checking.



CONTACT US

We're here to help you with the right electronic solutions for your needs.

 **+91 996-211-5144**

 **hitecheelastoseals.co.in**

 **elastoseals@yahoo.com**

 **Plot No.46, Srikalikambal Nagar,
Cholambedu Main road, Thirumullaivoyal,
Chennai-600062.**